

GOSSEN BALE CHOPPER, TOOLS, NEW CULVERTS, FITTINGS, TRUCK RAMP, LANDSCAPE STONE, LIGHT POLES, SEARS PUCH SCOOTER

Adjustable steel truck ramp/loading dock; (6) new 24" X 20' plastic culvert pipes; like-new Baur bandsaw; ZFE elec. nibbler; Metabo grinder; Spectra precision laser; Hitachi grinder; DeWalt tools; (7) light poles; Reddy heater; Tyler cast fittings; PVC & rubber fittings; copper pcs; collars; ductile cast fittings; wood fence; 150-gal 12V fuel tank; 500-gal tank with pump for used oil; pallet rack sec; Meyer snowplows; Brinly lawn roller; plastic totes; Ingersoll Rand air compressor, as is; 6' X 9' storage building; chain-link fence; office cubicles; draft table; A-frame with 3-ton hoist; septic test balloons; I-beam; concrete pipe lift lug; 6 pc guardrail approx. 12' long; trailer wheels; road signs; cones; concrete chute; sec. scaffolding; assorted piles of landscape stone; Sears puch compact DS60 scooter 1966 needs reassembled; ladders; cable slings; concrete catch basins; plastic totes

**NOTE**  
Owner retiring after 22+ years of a successful business. Start time 10:00 AM on smalls, large equipment/catalog items start at 10:30 AM. For questions call owner, Don, 330.207.3924

**ONSITE TERMS**  
Driver's license or State ID required to register for bidder number. Cash, Check, Debit Card, Visa, or Master Card accepted. 4% buyer's premium on all sales; 4% waived for cash or check when paid sale day. Information is believed to be accurate but not guaranteed. Multi Par auction process may be used.

**ONLINE TERMS**  
Visa, MasterCard & Wire Transfer accepted. Wire Transfer or Certified Check required on purchases totaling \$3,000 or greater. 5% buyer's premium on all sales. Information is believed to be accurate but not guaranteed. Multi par auction process may be used.

**AUCTION BY ORDER OF**  
L & S Excavating & Trucking Inc.



# ABSOLUTE AUCTION

TUESDAY, APRIL 28, 2026, 10:00 AM  
PREVIEW: MONDAY, APRIL 27, 2026, 12:00-4:00 PM



  
**RANDALL L. KIKO**  
AUCTIONEER/REALTOR  
330.831.0174  
randallkiko@kikocompany.com

## L & S EXCAVATING & TRUCKING INC. RETIREMENT AUCTION

**LIVE ONSITE WITH ONLINE BIDDING AVAILABLE**

- AUCTION HIGHLIGHTS**
- Excavators
  - Dozers
  - Skid Loaders
  - Rollers
  - Trucks
  - Trailers
  - Support Equipment
  - Tools


**KIKO** REALTORS AUCTIONEERS ADVISORS

4085 MIDDLETOWN RD.,  
NEW MIDDLETOWN, OH 44442

Information is believed to be accurate but not guaranteed. KIKO Auctioneers

www.kikoauctions.com | 800.533.5456

 Scan for auction details, including directions.

Absolute Auction. All sells to the highest bidders on location.

### SKID LOADERS, DOZERS, ATTACHMENTS, JOHN DEERE WHEEL LOADER

2015 Cat 242D skid loader C/H/A 2 sp hyd coupler, high flow, 2305 hrs with bucket; 2004 Cat 236B skid loader hyd. coupler with mat. bucket, hrs unknown; Mustang 960 skid loader with mat. bucket and pallet forks, 4830 hrs; pair new 12-16.5 tires and rims; one-owner 2023 Bobcat 6B QT landscape rake; QT JCT 6' hyd. brush mower; QT Bobcat one owner, 2023 post-hole digger with 15" auger; QT hyd jack hammer; QT 42" & 48" pallet forks; QT hyd 7' snowplow; QT Cat 4" trencher; 1996 JD 650G series IV dozer with canopy, 9' 6-way blade, 18" pads, 4 sp trans, 5554 hrs; 1994 JD 450G TC dozer with canopy, 8' 6-way blade, 4 sp trans, 16" pads, 5712 hrs; 1988 JD 444E articulate loader with 8' bucket and forks, hrs unknown



### BOMAG & WACKER ROLLERS & COMPACTOR, SHEEPS FOOT

1997 Bomag BW 172D-2 vibratory compactor, hyd drive, Deutz diesel, 2559 hrs, 66" smooth 14.9-24 rear tires; 2000 Wacker RD 11A double drum vibratory roller, new gas engine, hyd. dr. 36" drums; 2009 Wacker Neuson RTSC2 trench compactor 608 hrs, 3 cyl diesel, hyd. drive, 32" sheeps foot drums with remote controls; Tampo H2WL 9' pull-type sheeps foot



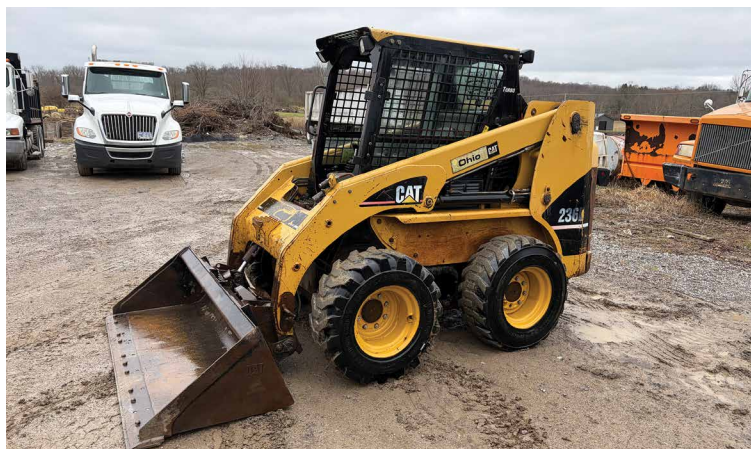
### EXCAVATORS

One-owner 2023 John Deere 85P excavator, 538 hrs; Yanmar diesel C/H/A hyd. coupler, aux. hyd, 17" rubber pads with 24" dirt bucket, side and rear-view cameras; one-owner 2021 Link Belt 130X4-1C exc. 1442 hrs, long stick with 24" WB dirt bucket Isuzu diesel hyd. coupler, aux hyd. C/H/A 24" pads; 2015 Cat mod. 305-5 E2-CR mini exc. C/H/A hyd couplers, aux hyd with thumb, 18" bucket, 16" rubber tracks, 4997 hrs; 2005 Cat 304CR mini exc. new hyd pump manual quick coupler, aux hyd. 20" dirt bucket, 17" rubber tracks; 2012 Kubota K008-3 mini exc. Kubota diesel, 940 hrs, 18" tooth bucket 7" rubber tracks; 1999 JD 120 exc. 12,269 hrs, long stick, hyd. coupler, aux. hyd, 36" dirt bucket, 24" pads; 2004 Case CX210 exc. long stick, cab/AC, aux. hyd. 36" dirt bucket, 24" pads, 10,542 hrs



### EXCAVATOR BUCKETS SELLING SEPARATE & ATTACHMENTS

24" dirt for 305 Cat; 48" ditching bucket for 305 Cat; The following fit Link Belt or JD 120/130 series: WB 66" ditching; (2) WB 48" dirt; 18" dirt; 24" dirt; 54" ditching; coupler; hyd. jack hammer; hyd. vibrating plate; WB 36" dirt bucket fits JD 85; WB 24" dirt bucket fits Case 210



### TRUCKS

Good 2019 International Prostar day cab semi, 232K miles, Cummins X15 505 HP 3 stage, wetline, 13 sp Eaton Fuller trans; 1995 Mack CH613 semi day cab 463K miles, 12L E7 Mack 9 sp 3 stage wetline with PTO; one-owner 2021 Chevy 5500 Duramax diesel, single-axle dump truck, 44K miles, auto, AC, pw PL, PTO dump with 11' stainless steel Galion-Godwin dump bed, 19,500 GVWR cap, nice; 1991 Int. 9000 tandem dump truck, shows 102K miles not actual, Cummins diesel 9 sp trans Eaton Fuller, 15' steel dump body; 1992 Int. 4900 tri-axle truck 17' alum. dump body, 306K miles not actual, Cummins diesel, 8 sp Eaton Fuller with creeper gear; 2010 Ford F-350 2WD auto, bad motor with 9' dump body, gas, not running; 1991 Volvo semi salvage title, wrecked, runs, good trans and rear end, 10' steel dump body; 2007 Chevy Tahoe 270K miles, 4WD

### TRAILERS

One-owner 2024 Eager Beaver mod 20XPT 20-ton tandem tag trailer, 20'+6' long, LED lights, nice; 1989 Trail King TK100DGP-483 tri-axle lowboy, detach 48' 102" wide with outriggers, air ride; 1980 East 25' alum dump trailer; 2015 Corn Pro 20' 14K# tilt trailer; 2000 Viking dual-tandem 50K GVWR, 19+5 tag trailer; 2001 Corn Pro 7X18 trailer 12K GVWR; 2016 5.5' X 10' trailer with fold-down ramp; 2004 Haulmark 6'X10' box trailer

### TRACTORS, EQUIPMENT

Case 885 David Brown diesel tractor w/ remote and loader; Int. 350 utility tractor with loader and backhoe not running; 3 pt. Pittsburg 7' disc; 3 pt Howse 5' brush hog; New Holland running gear

### CONCRETE BUGGY & SAWS, AIR COMPRESSORS, TRENCH BOXES & ROAD PLATES, TOOLS, PUMPS, BORING MACHINE

Miller Scootcrete powered concrete dump buggy sweet 16 mod with Honda engine; Gar-Bro 1.5 yd concrete hopper bucket; DeWalt D25980 elec. pavement breaker; ICS ES680 concrete saw; Wacker WP 1550 plate tamper; Diamond Products core cut CC1200; Diamond elec. core cut CC1300-XL; Markita 14" masonry saw; Homatro rescue tool hyd. power pack with 2 hanny reels and hyd line; Milwaukee dymo drill with Hilti cart and core bit; Honda & Wacker trash pumps; Lincoln 150 arc welder with 10 HP Kohler engine; alum. pipe clamps; 2002 Ingersoll Rand portable air compressor 1188 hrs Kubota diesel engine, pneumatic boring 4" mole X 52"; Toku TPB90 air hammer; air helldog, CH & E trailer mounted self-priming; water pump 4.5" discharge with Ford gas engine; Richmond 20-D horizontal boring machine; (2) Ultra Shore alum. trench box mod 548-89; steel 8'X16'X42' trench box; 5 steel road plates